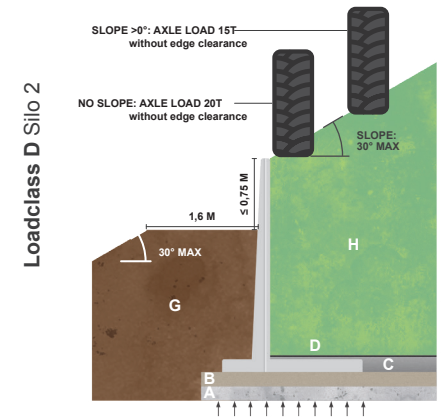
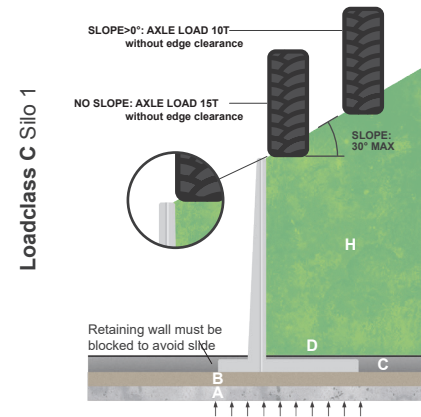


delivery and installation instructions

- The client will provide good accessibility to the site for heavy transport 44 tonnes.
- If the truck is unloaded by the client, we will provide 1 hour of unloading time. After the first hour, waiting hours will be charged at EUR 65/hour excluding VAT.
- If the elements are unloaded by our own crane truck, 1 hour of placement is provided. Any additional crane hours will be billed at 85 EUR/hour excluding VAT.
- In case of placement by crane truck, the customer provides the assistance of 1 to 2 persons
- The crane truck must be able to position itself just next to the foundations with sufficient space for the outriggers..
- The customer (contractor) is responsible for providing good load-bearing subsoil/foundations.
- Cobefa is not responsible for damage as a result of non-load-bearing foundations.
- When deviating from these load classes, a customised calculation note can always be requested.
- Cobefa only guarantees the use of the elements according to these load classes or when using the calculation notes provided by us.
- The guarantee only covers the replacement of the elements never installation of the elements or any consequential damage.

Load classes Agri L retaining wall



- A** Possibly rubble or concrete
B Stabilized sand
C Concrete (or stone rubble in case of asphalt top layer)
D Possibly asphalt
G Soil (1800 kg/m³)
H Corn/grass 1000 kg/m³, $\Phi=30^\circ$ *)

Legend

Always check that the bearing capacity of the soil is sufficient.

*) Storage calculations are carried out for materials with a density of no more than 1000kg/m³ and a maximum angle of maximum 30°. The maximum load authorised above the silage is 15 tonnes/axle. The dry content of the material to be stored is at least 33%.